

March, 2011
CENTRAL COMMAND

SAFESTAT REPORT

Nevada Highway Patrol
Captain Pat Gallagher

Overview

There were 85 crashes that occurred in March 2011. This is an increase of 14.9% from last month's 74 crashes, and it has increased 21.4% for crashes investigated in March 2010. Property crashes increased 21.4% compared to the month of February, injury crashes decreased by 11.1% as compared to February 2011. Central Command troopers also investigated one fatal crash during March 2011 that resulted in the death of one person. There were zero fatal crashes investigated in the prior month and one in March 2010. There were zero crashes involving impaired drivers, which was a decrease of 300% from the previous month. Of the 85 accidents, 15, or 17.6%, involved commercial motor vehicles. Commercial drivers were found to be at fault in 11, or 73.33%, of these accidents. Nine of the commercial vehicle accidents occurred on Interstate 80.

Total enforcement activity for March 2011 decreased by 125 violations as compared to February 2011, with 2136 total violations issued during March 2011. This is an increase of 8.5% compared to the March 2010 total of 1970 citations issued. Speed violations increased by 98 citations, or 9.8%, from the prior month. Hazardous moving violations increased by two citations, or 1.7%, from the prior month. Occupant restraint violations decreased by 27 citations, or 13.2%, compared to February 2011. There were 12 arrests of impaired drivers prior to a crash during March 2011 which was 10 less than in February 2011.

Commercial vehicle inspections decreased by 9.3% or 69 fewer inspections as compared to February 2011. There were 148 fewer safety violations written in March 2011 than in February 2011. There was also a decrease of 18.2%, or 18 fewer citations, in cited safety violations from February 2011. There were 24 vehicles and 17 drivers placed, "out of service" in March 2011. Vehicles placed out of service decreased by 20% as compared to February 2011. The 17 drivers placed out of service in March 2011 decreased 32% as compared to February 2011. Traffic personnel conducted 320 inspections during March 2011. This is an increase of 11.9%, or 34 inspections than were completed in February 2011.

Front office personnel showed a 57.5% increase in March 2011 accident reports processed as compared to February 2011. Arrest reports processed increased 48.4%, or 62 more compared to February 2011. Processed incident reports increased by 30 compared to February 2011. The Communications Center radio transmissions increased by 5.3% compared to February 2011. CAD incidents also increased by 1.2%, as compared to February 2011 and telephone calls increased by 10.3% as compared to February 2011.



Contents

Crash Analysis
Field Enforcement
Administrative Services
Personnel
Public Information
First Quarter Analysis

**CENTRAL
COMMAND**

April 6, 2011

CENTRAL COMMAND

CRASH ANALYSIS AND OVERVIEW

	March-11	Same period prior year	% Change	Prior Month	% Change
Total Crashes	85	70	21.4%	74	14.9%
Property Crashes [including commercial vehicles]	68	51	33.3%	56	21.4%
Injury Crashes [including commercial vehicles]	16	18	-11.1%	18	-11.1%
Fatal Crashes [including commercial vehicles]	1	1	0.0%	0	100.0%
DUI Crashes [DUI charged]	0	0	0.0%	3	-300.0%
Total persons killed in fatal crashes	1	1	0.0%	0	100.0%
Total drivers killed without seatbelts	0	0	0.0%	0	0.0%
Total passengers killed without seatbelts	0	0	0.0%	0	0.0%
Total drivers killed with seatbelts	1	1	0.0%	0	100.0%
Total passengers killed with seatbelts	0	0	0.0%	0	0.0%
Total persons killed - seatbelts not applicable	0	0	0.0%	0	0.0%
Total number of commercial vehicle crashes	15	6	150.0%	11	36.4%
Property crashes involving commercial vehicle	11	5	120.0%	9	22.2%
Injury crashes involving commercial vehicle	4	1	300.0%	2	100.0%
Fatal crashes involving commercial vehicle	0	0	0.0%	0	0.0%

Percentage of fatal crashes to total crashes 1.2%

Percentage of DUI crashes to total crashes 0.0%

Percentage of persons killed *without* seatbelts to total persons killed 0.0%

Percentage of commercial vehicle crashes to total crashes 17.6%

NARRATIVE ANALYSIS

[Narrative analysis to include trends or other applicable issues]

- Central Command investigated one fatal crash in March 2011 that resulted in the death of one driver that was wearing his seat belt.

FIELD ENFORCEMENT ACTIVITY

[Narrative analysis to include trends or other applicable issues]

	March-11	Same period prior year	% Change	Prior Month	% Change
DUI arrests from crashes ##	0	0	0.0%	3	-300.0%
DUI arrests <i>prior</i> to crashes ##	12	31	-61.3%	22	-45.5%
Other Arrests	112	105	6.7%	147	-23.8%
Total persons arrested (DUI included) ##	56	60	-6.7%	66	-15.2%
Speed violations	1098	1087	1.0%	1000	9.8%
Hazardous moving violations	123	90	36.7%	121	1.7%
Occupant restraint violations * ##	178	148	20.3%	205	-13.2%
Total violations [above violations included]	2138	1970	8.5%	2263	-5.5%
Commercial Enforcement					
Hazardous moving violations - citations/arrests	34	38	-10.5%	43	-20.9%
Other traffic violations - citations/arrests	29	26	11.5%	28	3.6%
Total safety inspections [level 1, 2, 3, 4, & 6]	673	827	-18.6%	742	-9.3%
Terminal inspections [level 5] CR only	20	5	300.0%	0	2000.0%
Total safety violations -- citation	81	141	-42.6%	99	-18.2%
Total safety violations -- repair order	483	988	-51.1%	631	-23.5%
Total vehicles placed "Out of Service"	24	54	-55.6%	30	-20.0%
Total drivers placed "Out of Service"	17	19	-10.5%	25	-32.0%
Total school buses inspected	0	142	-14200.0%	1	-100.0%
Total school buses placed "Out of Service"	0	17	-1700.0%	0	0.0%
Total trucks weighed	659	1007	-34.6%	652	1.1%
Total overweight citations	3	3	0.0%	2	50.0%
Total dyed fuel inspections	623	809	-23.0%	713	-12.6%
Total dyed fuel citations	0	0	0.0%	0	0.0%

NARRATIVE ANALYSIS

[Narrative analysis to include trends or other applicable issues]

- The average reported BAC for impaired drivers for March 2011 was 0.160.
- Of the 659 trucks weighed during March by Commercial Enforcement personnel, 190 were weighed on secondary roadways during 255 hours of team oriented, directed enforcement. This is an average of one truck being weighed every 80 minutes.

Commercial Activity [TRAFFIC PERSONNEL ONLY]							
Level 2/3 Inspections	Safety Violations Citation	Safety Violations Repair Order	Drivers Placed "Out of Service"	Vehicles Placed "Out of Service"	Dyed Fuel Inspections	Dyed Fuel Citations	
#	#	#	#	#	#	#	
March-11	320	65	279	15	8	225	0
March-10	248	63	232	9	18	237	0
% Change	29.0%	3.2%	20.3%	66.7%	-55.6%	-5.1%	100.0%

March-11	320	65	279	15	8	225	0
February-11	286	87	207	9	17	222	0
% Change	11.9%	-25.3%	34.8%	66.7%	-52.9%	1.4%	100.0%

ADMINISTRATIVE SERVICES	March-11	Same period prior year	% Change	Prior Month	% Change
COMMUNICATION CENTER					
Radio Transmissions	58467	58928	-0.8%	55536	5.3%
CAD incidents	8213	6187	32.7%	8117	1.2%
Telephone Calls	7214	7475	-3.5%	6541	10.3%
FRONT OFFICE					
Accident Reports Processed	274	66	315.2%	174	57.5%
Arrest Reports Processed	190	74	156.8%	128	48.4%
Incident / Officer Reports Processed	54	4	1250.0%	24	125.0%
COURT / WARRANT					
Warrants Received	146	223	-34.5%	176	-17.0%
Warrants Entered	146	264	-44.7%	228	-36.0%
Warrants Cleared	301	121	148.8%	135	123.0%
Warrants Validated	1414	2399	-41.1%	2182	-35.2%
Extradition / Transports	5	3	66.7%	4	25.0%

NARRATIVE ANALYSIS

[Narrative analysis to include trends or other applicable issues]

Contract Service overtime

Contract Service overtime was 167 hours with 3 contracts totaling \$14,449.87 during March 2011. This was an increase of \$483.90 from February 2011.

PERSONNEL

Central Command promoted Anthony Munoz to Elko Traffic Sergeant and Gabor Visnovitz to Tonopah Traffic Sergeant.

PUBLIC INFORMATION

During March Public Information Officer Trooper Stewart conducted one radio, one newspaper, and one television interview for Medal of Valor recipients from the Wells shooting. Trp. Stewart conducted 3 School presentations dealing with distracted driving, DUI / Alcohol awareness and a Career Fair.

AIR OPERATIONS

The Central Command aircraft flew 19.4 hours, completing 7 missions during March. There were two speed enforcement missions flown for February. The aircraft was down for routine maintenance and installation of a new engine. It is anticipated that the engine should provide approximately 4 years of service.

Below is a table of activity that occurred during the speed enforcement missions flown for February 2011.

Type of Violation	Enforcement Actions
Speed	12
Hazardous	3
Non-Hazardous	3
Seat belt	0
Arrests	0

QUARTERLY ANALYSIS

CRASH ANALYSIS AND OVERVIEW

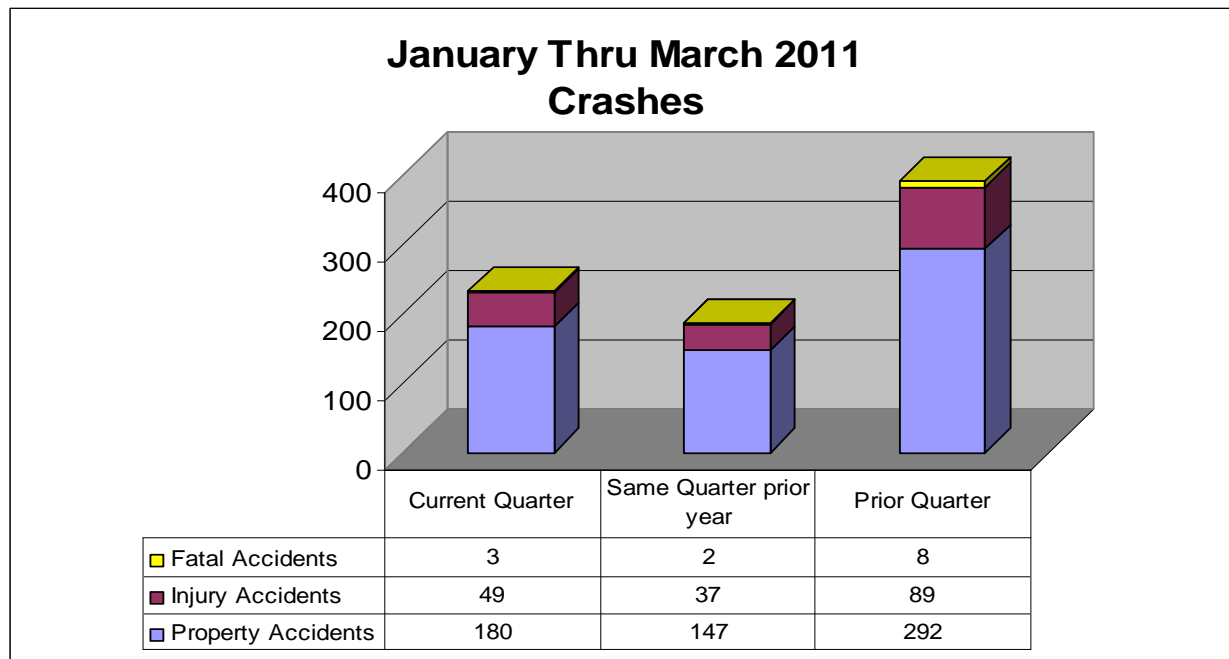
January thru March 2011	Current Quarter	Same Quarter prior year	% Change	Prior Quarter	% Change
Total Crashes	232	186	24.7%	389	-40.4%
Property Crashes [including commercial vehicles]	180	147	22.4%	292	-38.4%
Injury Crashes [including commercial vehicles]	49	37	32.4%	89	-44.9%
Fatal Crashes [including commercial vehicles]	3	2	50.0%	8	-62.5%
DUI Crashes [DUI charged]	7	5	40.0%	7	0.0%
Total persons killed in fatal crashes	3	2	50.0%	8	-62.5%
Total drivers killed without seatbelts	1	1	0.0%	3	-66.7%
Total passengers killed without seatbelts	0	0	0.0%	2	-200.0%
Total drivers killed with seatbelts	2	1	100.0%	1	100.0%
Total passengers killed with seatbelts	0	0	0.0%	2	-200.0%
Total persons killed - seatbelts not applicable	0	0	0.0%	0	0.0%
Total number of commercial vehicle crashes	41	23	78.3%	76	-46.1%
Property crashes involving commercial vehicle	32	17	88.2%	59	-45.8%
Injury crashes involving commercial vehicle	8	6	33.3%	16	-50.0%
Fatal crashes involving commercial vehicle	1	0	100.0%	1	0.0%

Percentage of fatal crashes to total crashes 1.3%

Percentage of DUI crashes to total crashes 3.0%

Percentage of persons killed *without* seatbelts to total persons killed
Seat belts applicable 33.3%

Percentage of commercial vehicle crashes to total crashes 17.7%



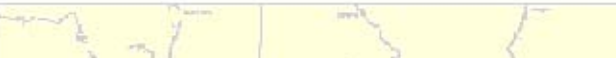
FIELD ENFORCEMENT ACTIVITY

January thru March 2011	Current Quarter	Same Quarter prior year	% Change	Prior Quarter	% Change
DUI arrests from crashes ##	7	5	40.0%	7	0.0%
DUI arrests <i>prior</i> to crashes ##	65	94	-30.9%	61	6.6%
Other Arrests	396	364	8.8%	258	53.5%
Total persons arrested (DUI included) ##	193	193	0.0%	152	27.0%
Speed violations	3112	3115	-0.1%	2305	35.0%
Hazardous moving violations	378	295	28.1%	374	1.1%
Occupant restraint violations * ##	729	568	28.3%	485	50.3%
Total violations [above violations included]	6900	6219	11.0%	4833	42.8%
Commercial Enforcement					
Hazardous moving violations- citations/arrests	89	88	1.1%	34	161.8%
Other traffic violations - citations/arrests	92	52	76.9%	20	360.0%
Total safety inspections [level 1, 2, 3, 4, & 6]	2130	2157	-1.3%	1819	17.1%
Terminal inspections [level 5] CR only	20	5	300.0%	0	2000.0%
Total safety violations -- citation	256	361	-29.1%	173	48.0%
Total safety violations -- repair order	1666	2644	-37.0%	1311	27.1%
Total vehicles placed "Out of Service"	74	129	-42.6%	59	25.4%

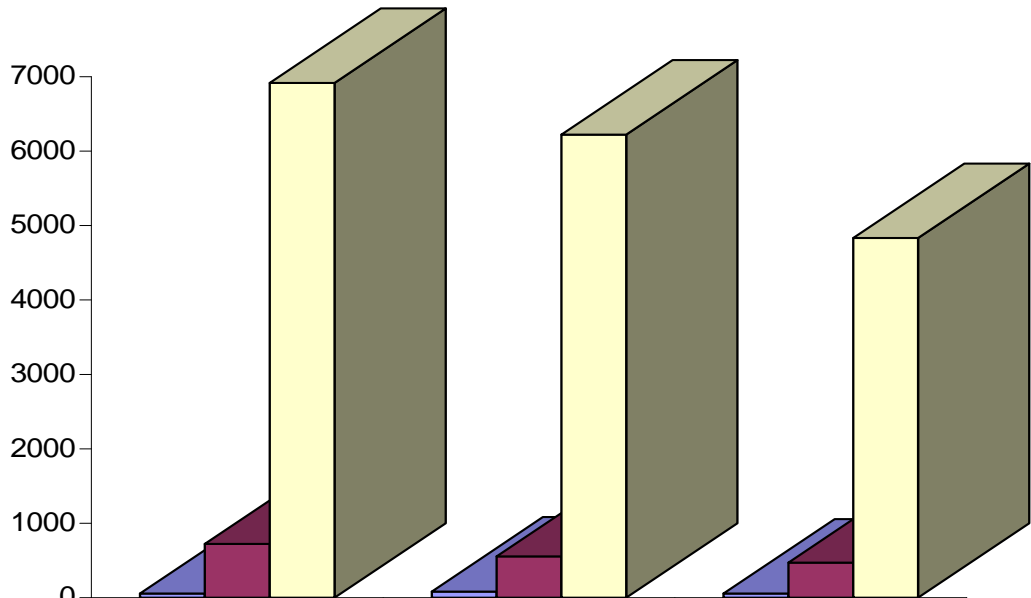
Total drivers placed "Out of Service"	65	65	0.0%	44	47.7%
Total school buses inspected	2	149	-98.7%	28	-92.9%
Total school buses placed "Out of Service"	0	18	-1800.0%	0	0.0%
Total trucks weighed	1775	2331	-23.9%	2767	-35.9%
Total overweight citations	12	16	-25.0%	5	140.0%
Total dyed fuel inspections	2034	2248	-9.5%	1533	32.7%
Total dyed fuel citations	0	1	-100.0%	0	0.0%

* *Seat belt and child restraint*

Commercial Enforcement Activity Included



Enforcement Totals January thru March 2011



	Current Quarter	Same Quarter prior year	Prior Quarter
DUI Arrests Prior to Crash	65	94	61
Occupant Restraints	729	568	485
Total Violations	6900	6219	4833

January thru March 2011						
Commercial Activity [TRAFFIC PERSONNEL ONLY]						
Level 2/3 Inspections	Safety Violations Citation	Safety Violations Repair Order	Drivers Placed "Out of Service"	Vehicles Placed "Out of Service"	Dyed Fuel Inspections	Dyed Fuel Citations
#	#	#	#	#	#	#

Current Quarter	910	243	801	42	33	704	1
Prior Year Quarter	836	237	663	31	36	706	0
% Change	8.9%	2.5%	20.8%	35.5%	-8.3%	-0.3%	100.0%

Current Quarter	910	243	801	42	33	704	1
Prior Quarter	702	198	593	32	24	594	0
% Change	29.6%	22.7%	35.1%	31.3%	37.5%	18.5%	100.0%

